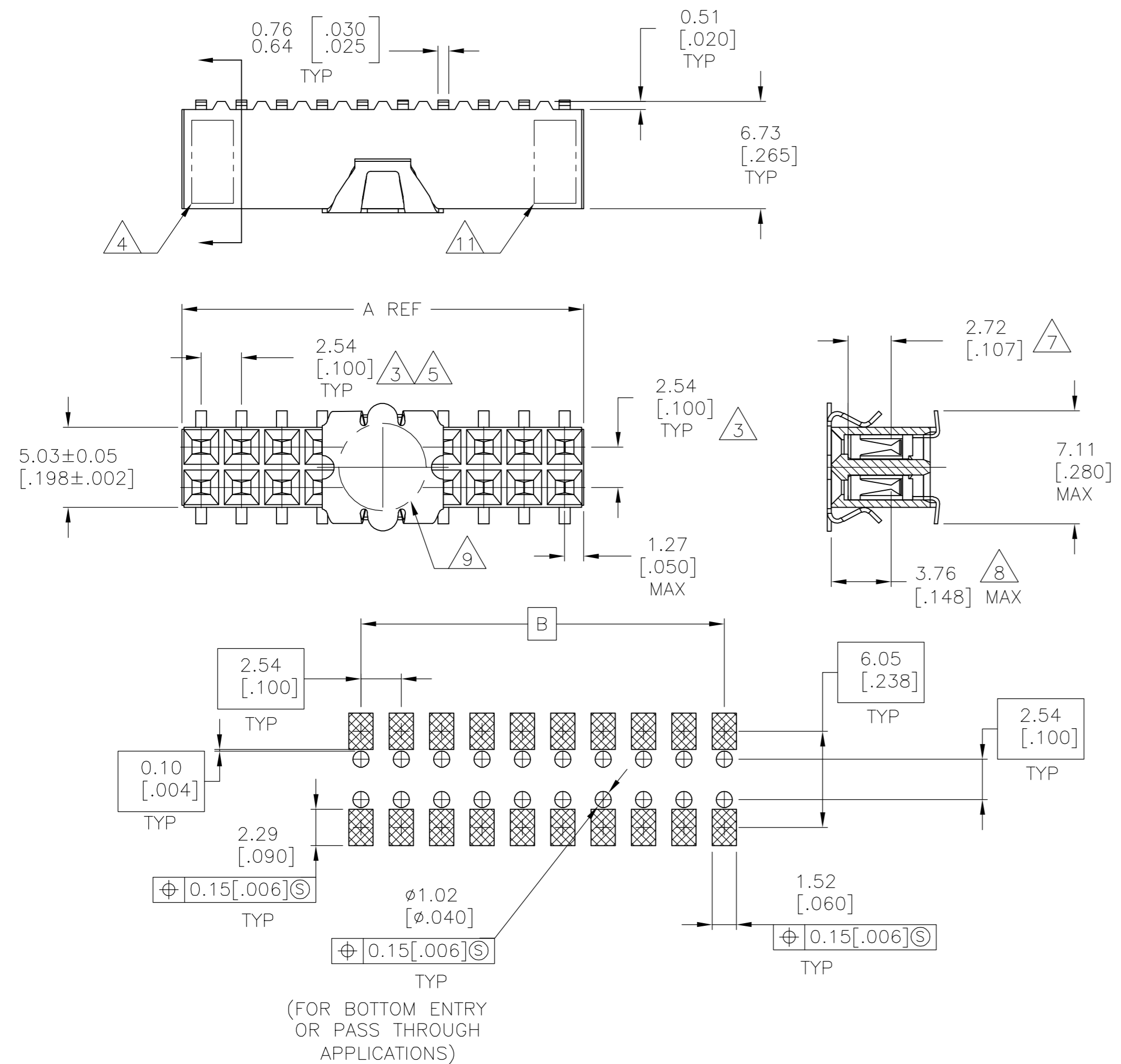


THIS DRAWING IS UNPUBLISHED. RELEASED FOR PUBLICATION
 © COPYRIGHT BY TYCO ELECTRONICS CORPORATION. ALL RIGHTS RESERVED.

Loc		DIST		REVISIONS				
P	LTR	DESCRIPTION			DATE	DWN	APVD	
J1		ECO 05 007253			14APR06	BSV	JO	

FOR PART NUMBERS 5-147104-1 THRU 9-147104-0
 SEE SHEET 2



RECOMMENDED PC BOARD LAYOUT
 0.20[.008] THICK STENCIL

FINISH	EIA TAPE WIDTH	B	A	NO.OF POSN.	PART NUMBER
2	120mm	99.06[3.900]	101.60[4.000]	80	4-147104-0
		96.52[3.800]	99.06[3.900]	78	3-147104-9
		93.98[3.700]	96.52[3.800]	76	3-147104-8
		91.44[3.600]	93.98[3.700]	74	3-147104-7
		88.90[3.500]	91.44[3.600]	72	3-147104-6
		86.36[3.400]	88.90[3.500]	70	3-147104-5
		83.82[3.300]	86.36[3.400]	68	3-147104-4
		81.28[3.200]	83.82[3.300]	66	3-147104-3
		78.74[3.100]	81.28[3.200]	64	3-147104-2
		76.20[3.000]	78.74[3.100]	62	3-147104-1
		73.66[2.900]	76.20[3.000]	60	3-147104-0
		71.12[2.800]	73.66[2.900]	58	2-147104-9
	68.58[2.700]	71.12[2.800]	56	2-147104-8	
	66.04[2.600]	68.58[2.700]	54	2-147104-7	
	63.50[2.500]	66.04[2.600]	52	2-147104-6	
	60.96[2.400]	63.50[2.500]	50	2-147104-5	
	58.42[2.300]	60.96[2.400]	48	2-147104-4	
	55.88[2.200]	58.42[2.300]	46	2-147104-3	
	53.34[2.100]	55.88[2.200]	44	2-147104-2	
	50.80[2.000]	53.34[2.100]	42	2-147104-1	
	48.26[1.900]	50.80[2.000]	40	2-147104-0	
	45.72[1.800]	48.26[1.900]	38	1-147104-9	
	43.18[1.700]	45.72[1.800]	36	1-147104-8	
	40.64[1.600]	43.18[1.700]	34	1-147104-7	
38.10[1.500]	40.64[1.600]	32	1-147104-6		
35.56[1.400]	38.10[1.500]	30	1-147104-5		
33.02[1.300]	35.56[1.400]	28	1-147104-4		
30.48[1.200]	33.02[1.300]	26	1-147104-3		
27.94[1.100]	30.48[1.200]	24	1-147104-2		
25.40[1.000]	27.94[1.100]	22	1-147104-1		
22.86[.900]	25.40[1.000]	20	1-147104-0		
20.32[.800]	22.86[.900]	18	147104-9		
17.78[.700]	20.32[.800]	16	147104-8		
15.24[.600]	17.78[.700]	14	147104-7		
12.70[.500]	15.24[.600]	12	147104-6		
10.16[.400]	12.70[.500]	10	12 147104-5		
7.62[.300]	10.16[.400]	8	12 147104-4		
5.08[.200]	7.62[.300]	6	12 147104-3		
2.54[.100]	5.08[.200]	4	12 147104-2		
24mm	-	2	12 147104-1		

OBSOLETE

THIS DRAWING IS A CONTROLLED DOCUMENT.

DIMENSIONS: mm [INCHES]

TOLERANCES UNLESS OTHERWISE SPECIFIED:

0 PLC	± -
1 PLC	± -
2 PLC	± .005[0.13]
3 PLC	± -
4 PLC	± -
ANGLES	± -
FINISH	SEE TABLE

FINISH 1

DWN M.BINNER 06NOV02
 CHK J.OLSON 06NOV02
 APVD J.OLSON 06NOV02
 PRODUCT SPEC
 APPLICATION SPEC
 108-25022
 WEIGHT 114-25018
 CUSTOMER DRAWING

tyco Electronics Corporation
 Harrisburg, Pa 17105-3608

NAME RECEPTACLE ASSEMBLY, MOD IV, DOUBLE ROW, DUAL ENTRY, .100X.100CL, SURFACE MOUNT, AMPMODU

SIZE A2 CAGE CODE 00779 DRAWING NO C=147104 RESTRICTED TO -

SCALE 4:1 SHEET 1 OF 2 REV J1

THIS DRAWING IS UNPUBLISHED. RELEASED FOR PUBLICATION
 © COPYRIGHT BY TYCO ELECTRONICS CORPORATION. ALL RIGHTS RESERVED.


Loc	DIST	REVISIONS			
P	LTR	DESCRIPTION	DATE	DWN	APVD
AD	00	SEE SHEET 1	-	-	-

- 1 HOUSING: FLAME RETARDANT, GLASS FILLED, POLYESTER, COLOR: BLACK.
CONTACT: PHOSPHOR BRONZE
VACUUM COVER: STAINLESS STEEL
- 2 CONTACT: DUPLEX PLATED 0.25µm[.000010] GOLD IN CONTACT AREA, 3.81-7.62µm[.000150-.000300] BRIGHT TIN-LEAD ON, LEADS, ALL OVER 1.27µm[.000050] MINIMUM NICKEL
- 3 THESE DIMENSIONS PERTAIN TO CAVITY CENTERLINES ONLY NOT TO CONTACT LOCATIONS
- 4 TYCO PART NUMBER AND DATE CODE ARE MARKED IN APPROXIMATE LOCATION SHOWN.
- 5 TOLERANCE IS NON-CUMULATIVE.
- 6 2 POSITION DATE CODE IS MARKED OPPOSITE SIDE OF TYCO LOGO.
- 7 POINT OF MEASUREMENT DIMENSION FOR PLATING THICKNESS (INSIDE CONTACT BEAM).
- 8 POINT-OF-CONTACT DIMENSION.
- 9 ø5.51[.217] MIN TARGET AREA FOR VACUUM PICK UP. COVER TO BE REMOVED AFTER SOLDERING.
- 10. PACKAGED IN TAPE & REEL PER EIA 481 SPECIFICATION..
- 11 TYCO TRADEMARK AND CSA LOGO ARE MOLDED INTO HOUSING.
- 12 NO PART NUMBER REQUIRED ON THIS PART.
- 13 CONTACT: DUPLEX PLATED 0.25µm[.000010] GOLD IN CONTACT AREA, 3.81-7.62µm[.000150-.000300] MATTE TIN ON LEADS, ALL OVER 1.27µm[.000050] MINIMUM NICKEL.
- 14 ROHS 2002/95/EC COMPLIANT.

120mm	99.06[3.900]	101.60[4.000]	80	9-147104-0	
	96.52[3.800]	99.06[3.900]	78	8-147104-9	
	93.98[3.700]	96.52[3.800]	76	8-147104-8	
	91.44[3.600]	93.98[3.700]	74	8-147104-7	
	88.90[3.500]	91.44[3.600]	72	8-147104-6	
	86.36[3.400]	88.90[3.500]	70	8-147104-5	
	83.82[3.300]	86.36[3.400]	68	8-147104-4	
	81.28[3.200]	83.82[3.300]	66	8-147104-3	
	78.74[3.100]	81.28[3.200]	64	8-147104-2	
	76.20[3.000]	78.74[3.100]	62	8-147104-1	
	73.66[2.900]	76.20[3.000]	60	8-147104-0	
	71.12[2.800]	73.66[2.900]	58	7-147104-9	
88mm	68.58[2.700]	71.12[2.800]	56	7-147104-8	
	66.04[2.600]	68.58[2.700]	54	7-147104-7	
	63.50[2.500]	66.04[2.600]	52	7-147104-6	
	60.96[2.400]	63.50[2.500]	50	7-147104-5	
	58.42[2.300]	60.96[2.400]	48	7-147104-4	
	55.88[2.200]	58.42[2.300]	46	7-147104-3	
72mm	53.34[2.100]	55.88[2.200]	44	7-147104-2	
	50.80[2.000]	53.34[2.100]	42	7-147104-1	
	48.26[1.900]	50.80[2.000]	40	7-147104-0	
	45.72[1.800]	48.26[1.900]	38	6-147104-9	
	43.18[1.700]	45.72[1.800]	36	6-147104-8	
	40.64[1.600]	43.18[1.700]	34	6-147104-7	
	38.10[1.500]	40.64[1.600]	32	6-147104-6	
	35.56[1.400]	38.10[1.500]	30	6-147104-5	
	33.02[1.300]	35.56[1.400]	28	6-147104-4	
	44mm	30.48[1.200]	33.02[1.300]	26	6-147104-3
27.94[1.100]		30.48[1.200]	24	6-147104-2	
25.40[1.000]		27.94[1.100]	22	6-147104-1	
22.86[.900]		25.40[1.000]	20	6-147104-0	
20.32[.800]		22.86[.900]	18	5-147104-9	
17.78[.700]		20.32[.800]	16	5-147104-8	
15.24[.600]		17.78[.700]	14	5-147104-7	
12.70[.500]		15.24[.600]	12	5-147104-6	
10.16[.400]		12.70[.500]	10	5-147104-5	
7.62[.300]		10.16[.400]	8	5-147104-4	
24mm	5.08[.200]	7.62[.300]	6	5-147104-3	
	2.54[.100]	5.08[.200]	4	5-147104-2	
FINISH	EIA TAPE WIDTH	B	A	NO.OF POSN.	PART NUMBER

- 13
- 14
- 12
- 12
- 12
- 12
- 12
- 6

THIS DRAWING IS A CONTROLLED DOCUMENT.

DWN M.BINNER 06NOV02	 Tyco Electronics Corporation Harrisburg, Pa 17105-3608
CHK J.OLSON 06NOV02	
APVD J.OLSON 06NOV02	
PRODUCT SPEC	
APPLICATION SPEC	NAME
108-25022	RECEPTACLE ASSEMBLY, MOD IV, DOUBLE ROW, DUAL ENTRY, .100X.100CL, SURFACE MOUNT, AMPMODU
WEIGHT 114-25018	SIZE CAGE CODE DRAWING NO RESTRICTED TO
CUSTOMER DRAWING	A2 00779 C=147104 -
	SCALE 1:1 SHEET 2 OF 2 REV J1

DIMENSIONS: mm [INCHES]
 TOLERANCES UNLESS OTHERWISE SPECIFIED:
 0 PLC ± -
 1 PLC ± -
 2 PLC ± .005[0.13]
 3 PLC ± -
 4 PLC ± -
 ANGLES ± -
 MATERIAL SEE TABLE

147104

A